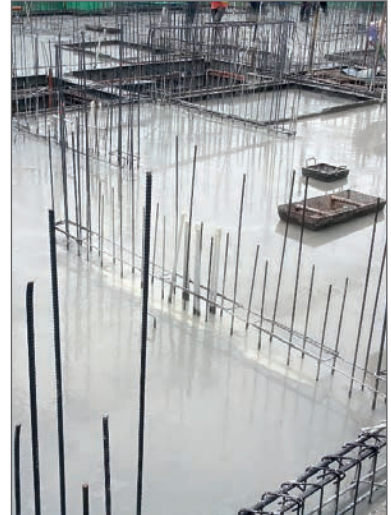


# AFFORDABLE BUILDING CONCEPTS

FOR A GREENER AND BRIGHTER FUTURE



# Our Services

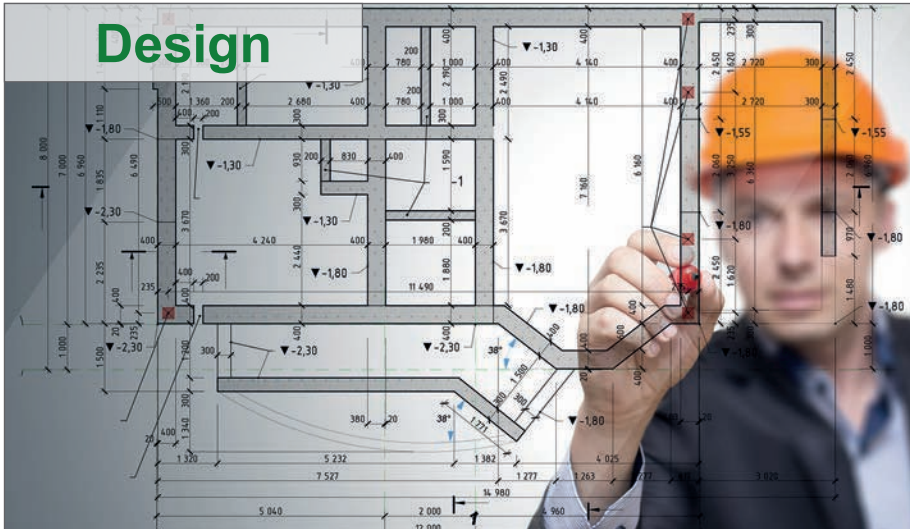


## Planning



Understanding client requirements in detail is of crucial importance to us. We will discuss all aspects of a building project with a client and then arrange a strict time-line sequence with action points against each target or deadline with a clear division of responsibilities for each member of our team involved in the build. Everything we undertake for a client is agreed and planned in advance of any building project so that targets can be met and specifications completed in full.

## Design



Once the basic parameters of a building project have been agreed with a client and signed off by both parties, the full details are sent to our design engineers and architects to begin working on producing a full set of designs. Once the designs have been agreed and signed off by a client, they are sent to our Project Director and his project managers.

## Completion



The Project Director will sign off each completed house against the agreed designs and inform the client each time a new house has been completed. Each new build is inspected in great detail before the Project director will sign it off as being complete.



# ABC Alu-Plas System

  
**AFFORDABLE  
BUILDING CONCEPTS**  
FOR A GREENER AND BRIGHTER FUTURE





# ABC Alu-Plas System

  
**AFFORDABLE  
BUILDING CONCEPTS**  
FOR A GREENER AND BRIGHTER FUTURE





# ABC Foam Cement System



**Our Patented Foam Cement Panels have many advantages over conventional building methods due to its Low Thermal Conductivity, Light Weight Materials, Excellent Sound Insulation, A Level Fireproof, Long Life Span and Faster Installation Time.**

Our system is fully certified with , SGS and ISO certifications and has been used for the construction of Affordable Housing, Apartments, Schools and Hospitals throughout the world.

## Energy Efficient

- Cement foam is an excellent thermal insulation material.
- Helps lower heating and cooling costs.
- Helps eliminate unwanted air infiltration.
- Creates a more comfortable indoor living environment.

## Minimal Waste

- Pre-cut to the specific requirement of your design.
- Simplifies framing, insulation and sheeting to one process.
- Faster construction cycle reduces labour costs.
- Pre-punched openings for electrical and plumbing.

## Safety

- Non-toxic and totally inert.
- Contains no Chlorofluorocarbon (CFC)
- Contains no Hydro-fluorocarbon (HFC)
- No danger to health during installation.

## Sustainable Material

- Will not Rot, Rust or Decompose.
- Maintenance Free.
- Maintains structural strength.
- Long life span (50-100 Years)

## Recyclable

- Cement foam can be recycled in a number of ways.
- Foam Cement Panels are 100% recyclable.
- Ozone friendly material.

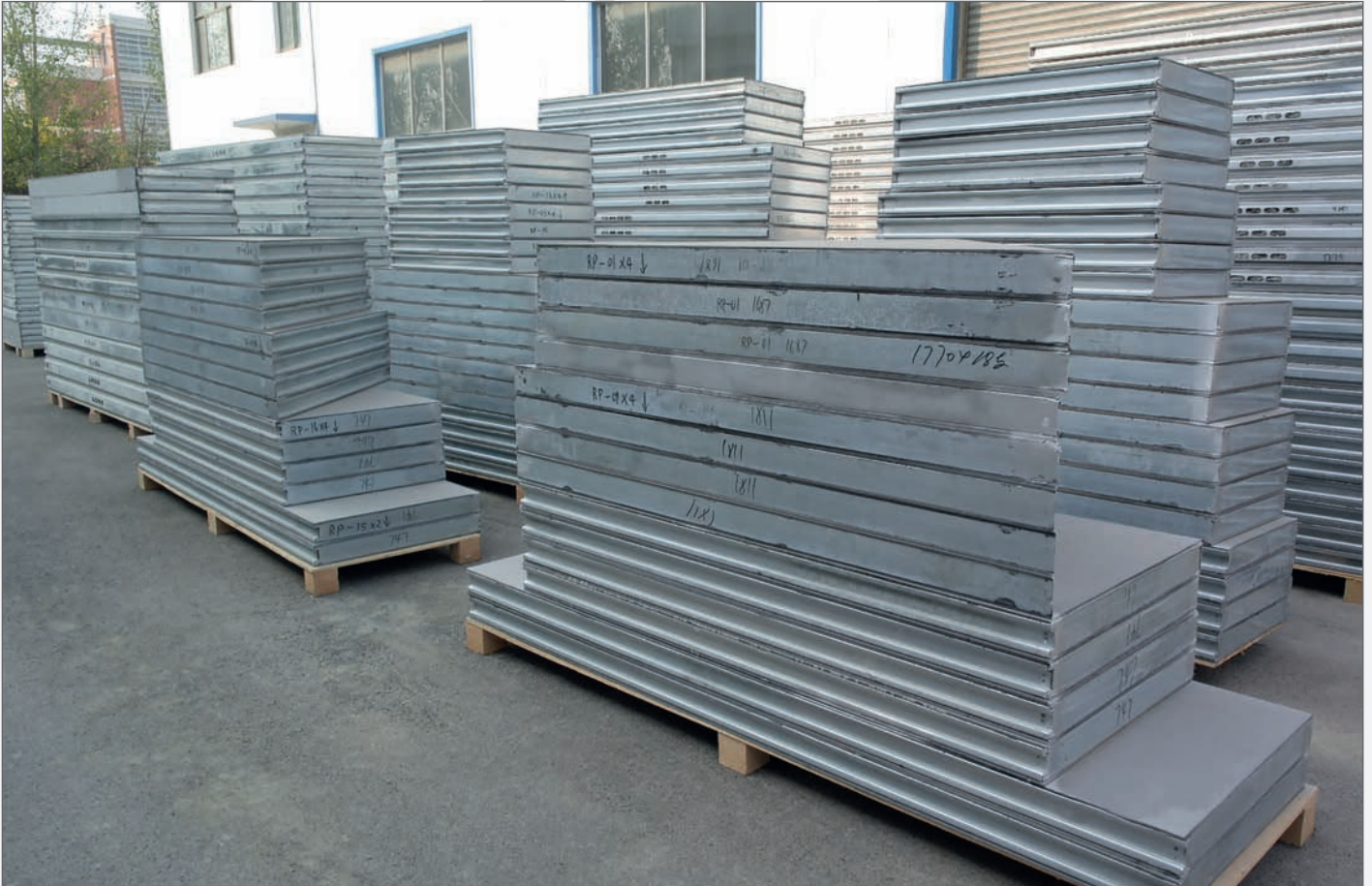
## Mould, Insect and Rodent Resistant

- Totally free of any nutritional value for insects.
- Excellent resistance to moisture absorption.
- Resists termites, other insects and rodents.



# ABC Foam Cement System

  
**AFFORDABLE  
BUILDING CONCEPTS**  
FOR A GREENER AND BRIGHTER FUTURE







ABC Power International Ltd  
Carnmore, Oranmore,  
Co. Galway, Ireland.

info@abcpowerintl.com  
www.abcpowerintl.com

A Company within the Asieur Group.

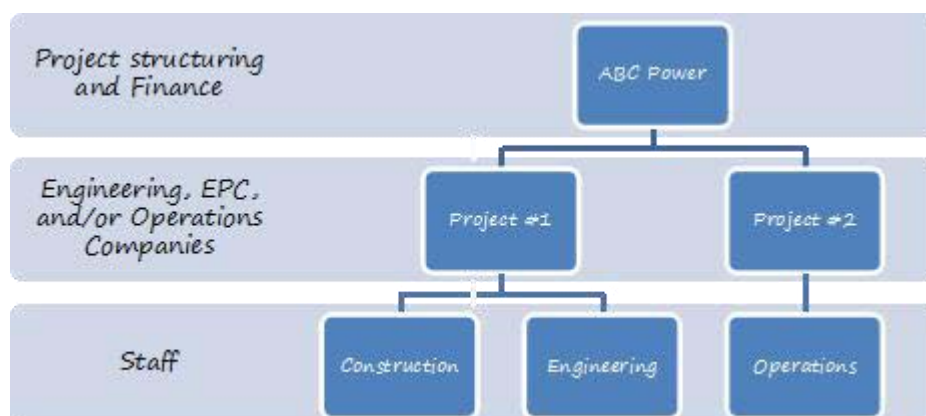
Tel: +353 91 792892 / Fax: +353 91 792893

## ABC Power Consortium

### Structure of Consortium

ABC Power Consortium (ABC Power) has assembled a highly capable team of technical, operational, strategic, and financial experts to undertake various electricity projects in Cote d'Ivoire. ABC Power is prepared to engineer, construct, operate or maintain any type of generation, transmission, or distribution infrastructure required.

The personnel within ABC Power have a vast history in developing and financing electricity projects and have worked with many large suppliers, EPC contractors, engineers, and/or operators in the past. These experienced and reputable companies will form part of each project as required. ABC Power has structured itself to work as follows:



Unlike many of its competitors, ABC Power understands that successful projects are ones that are structured properly from the beginning while recognizing that each project is unique. As example; rural electrification projects do not require a team of international contractors and equipment. Construction capability exists locally or regionally.

Training and capacity building will strengthen this capability and develop the much needed engineering support. An economic rural electrification project is one executed with limited international support. Conversely, hydroelectric generation projects are financed on the strength of the pre-feasibility and feasibility studies, the environmental/social impact assessment (ESIA) and a well-developed power purchase agreement (PPA). These skill sets are specialized in nature and require best-in-business support to ensure financability. Understanding the requirements of each project in context with local capability is key to developing the most efficient project structure possible.

The core experts within ABC Power have experience delivering projects in Africa (**Annex I**). ABC Power will be responsible for assembling all required capabilities to execute individual projects. The network of contacts developed by the experts within ABC Power will be leveraged to match the demands of each project to the capabilities available (**Annex II**). Treating each project as a separate activity will ensure the correct structure is offered from the outset.



**A Company within the Asieur Group.**

Tel: +353 91 792892 / Fax: +353 91 792893

## **Annex II – Partner Capabilities**

### **Transmission - SNC - Lavalin**



**413,000  
MEGAWATTS  
OF EXPERIENCE,**

approximately 114,000  
kilometers of transmission  
and distribution lines and  
more than 2,500 substation  
experience worldwide.

As the world's demand for sustainable power grows, so do our contributions to the sector. SNC-Lavalin's first assignments more than a century ago were for power facilities, and SNC-Lavalin has since installed enough capacity to power 35 cities the size of New York, and enough transmission and distribution lines to circle the globe almost three times. The rising global demand for power is accompanied by an urgent need to reinforce existing power delivery systems and build new networks. As a leading provider of services in this field, SNC-Lavalin works with its global clients to address this need with cost-effective, sustainable and customized solutions for high-voltage transmission infrastructure (up to 800 KV and HVDC expertise up to +/- 600 KV DC), including automation and telecommunication.

### **Thermal Generation – SNC - Lavalin**



A market leader in thermal power, SNC-Lavalin has designed and built more than 49,000 MW of projects in 200 locations worldwide, including natural-gas-fired plants, alternative-fueled projects, coal-fired projects, diesel power plants and cogeneration facilities ranging in capacity from 25 to 2,250 MW. With a relentless focus on safety, risk management and project execution excellence, SNC-Lavalin is committed to delivering the highest quality and most efficient projects in the industry.



The Fenix Power Project is a nominal 570-MW combined cycle power plant that will produce electrical power for the Red Elctrica de Peru (REP) substation in Chilca, Peru, approximately 65 kilometres south of Lima. The power plant will not only provide 10 percent of Peru's power, it will also render 2,000 m3 of potable water to a local municipality each day using its seawater intake structure. This helps promote the efficient use of natural resources, since new wells will not need to be built.

**A Company within the Asieur Group.**

Tel: +353 91 792892 / Fax: +353 91 792893

## **Hydropower - Hatch**



### Greenfield hydroelectric developments

Many factors contribute to making a hydroelectric project successful: financing, selection and design of the best sites, permits, safety standards, and risk management. Hatch works with waterpower developers and operators in both the private and public sectors, providing full engineering design, procurement, and construction management services to minimize project risks and maximize profitability.



### Redevelopments and rehabilitation

As hydropower facilities age, owners and operators work to extend their assets' lives, or responsibly and safely decommission them. Hatch has the knowledge and experience in all types of upgrades and refurbishments. We conduct condition audits, and provide full life-extension and enhancement services. Tools like Grow 3D and proprietary software, such as Hatch's HydroVantage, can help identify risks to minimize and capital expenditures to prioritize.



### Dam and public safety studies

The Hatch brand is synonymous with dam safety. In Canada alone, Hatch has conducted over 300 dam-safety assessments and been instrumental in establishing industry best practices. Hatch keeps abreast of evolving dam safety regulations and engineering approaches, tools, and solutions.





# AFFORDABLE BUILDING CONCEPTS

FOR A GREENER AND BRIGHTER FUTURE



new generation  
construction solutions

# systems comparison

## Plywood Formworks



Expensive and time consuming. Requires highly skilled carpenters and a large amount of materials to produce structure. After removal of forms there are repairs to be done. Many of materials used with plywood formworks are not reusable.

## Steel Formworks



Large capital outlay needed. They are heavy, require cranes, large amounts of scaffold and man power to install. It is difficult to install rebars. Steel formwork has to be removed by crane due to weight. Architectural flexibility is limited when using steel formworks.



Prefabricated fibreboard formwork system. It is light, simple and easy to install manually (no crane needed). Wall braces are needed only for concrete works. After concreting walls are ready for jointing and final finish.

There are no reinforcing tie wires needed as spacers are holding rebars in correct position. Electrical and plumbing works are completed prior concreting works.

## panels standard dimensions

### Width x Height

1,220 x 2,440 mm (4 feet x 8 feet)

1,200 x 3,000 mm

### Thickness - core infill

100mm (4 inch), 125mm (5 inch),

150mm (6 inch), 200mm (8 inch)



From specially designed plastic spacers made from 100% recycled plastic and fibreboard boards. Spacers and boards are bonded together with special adhesive to form a very strong, self supporting formwork, capable of being filled onsite with wet concrete.

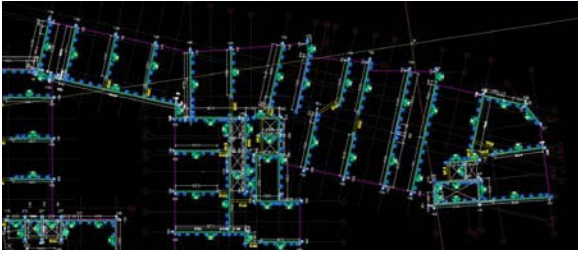
uses only Recycled and Sustainable Products

a Green Building System



# Building process

## 1. CAD Panels design



## 2. Panels manufacture





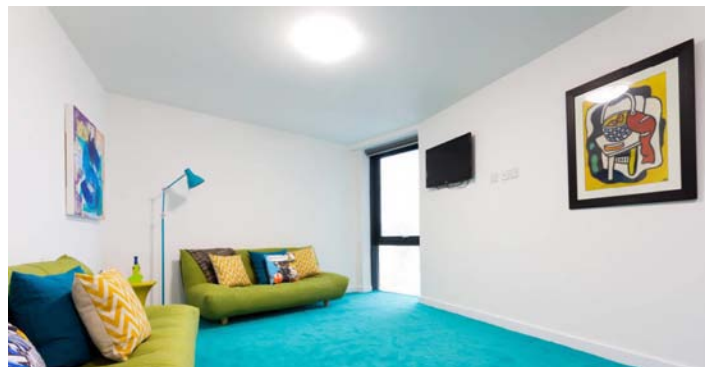
### 3. Panels erection



### 3. Rebar and concrete placement



### 4. Internal walls finish



### 4. External walls finish



recommended for use  
in any type of building design



# APPLICATION Guidelines

A number of points should be noted with regard to the application of Duralay and the water solution:

- ✓ The recommended application rate of Duralay is 200ml per cubic meter. This equates to 30 ml per square meter at a depth of 150mm.
- ✓ Water puddles should not be allowed to form on the road surface as this may cause local saturation of the material
- ✓ The moisture content of the soil is important and during the compaction process should be maintained to the particular material's Optimum Moisture Content (OMC) – 1% below optimum OMC.
- ✓ Care must be taken that the correct compaction method is applied so as to achieve the highest level of compaction. The benefit of this is an increased bearing capacity.
- ✓ Over-spraying or over-lapping should also be avoided to ensure correct coverage and dosage rates.

## MACHINERY Required TECHNICAL Support

Machinery required for stabilization of layers (15 – 20cm thickness):

- ✓ 1 Motor Grader
- ✓ 1 Water Tanker
- ✓ 1 Pad foot Vibrator Roller or Grid Roller (Optional)
- ✓ 1 Smooth drum 10 Ton vibrator Roller
- ✓ PTR Rubber tyre roller (12 ton)

We provide a technical advisory service supported by a team of specialists in the field.

The service includes on-site assistance, technical advice & training on evaluation trials and laboratory work.



**3000KG/H**

**PET Bottle Cutting, Washing and Drying machine line**

Date: 31/05/2017



Photos only for reference





**Horizontal dewatering machine**

For Drying the Flake, final moisture 1.8%

16	Horizontal dewatering machine	1unit
	Motor power	45kw
	Rotating speed	2100rpm
	Dewatering way	Continuous dewatering
	Final moisture: 1.8%	
	Adopt NSK Bearing	
	The place which contact with material is made of stainless steel 304	



**Label separator**

For separating the Labels from PET Flake again, to make sure there will be no PE/PP mixed with PET

17	Label separator	1unit
	Motor power of material sending	1.5kw, motor brand Siemens Bade
	Impurity sucking blower power	4kw
	Dimension: L*W*H	2100 * 900*5200mm
	The place which contact with material is made of Stainless steel 304	

**Air conveying hopper**

+

**Self-lifting storage**

For packing the Cleaning, Drying flake

**ASIEUR**  
CONSTRUCTION EQUIPMENT

*FIRST FOR  
CONSTRUCTION  
PLANT  
SALES & SPARES*





## **PLANT PARTS**

As well as manufacturing, ASIEUR have developed relationships with all of the major parts and spares manufacturers servicing the industry and so we can deliver high-quality, low-cost service, maintenance and repair solutions to our clients.

**-PARTS AND SPARES**

**-FILTERS AND LUBRICANTS**

**-SEAL KITS, BEARINGS, STARTERS AND ALTERNATORS**

**-BUCKET TEETH AND ATTACHMENTS**

**-SERVICE TOOLS AND EQUIPMENT**

**-SERVICE KITS FOR ALL MACHINE MAKES AND MODELS**

**-SAFETY LIGHTING, CAMERAS, MIRRORS AND ALARMS**

**-LIFTING KITS, WEB SLINGS, RATCHET STRAPS AND ACCESSORIES**

**-TYERS, TRACKS AND UNDER CARRIAGE**



**VOLVO**

**TEREX**

**HITACHI  
ZAXIS**

**KOMATSU**

**CASE  
CONSTRUCTION**

**ESCO**



**JCB**



**Iskra**  
Iskra Kondenzatorji

**FUCHS**

**Donaldson**

**BALDWIN  
FILTERS**

**CAT**

**ASIEUR**

**DEWALT**

**Lucas**

**Gates**

**KAB // Seating**

**CNH**

## ***THE ASIEUR RANGE***



As well as construction and construction plant parts, ASIEUR Manufacture a range of haulage trailers on air or spring suspension. Available in flat-bed and container configuration we also make more Specialised trailers such as concrete tankers.



**FLAT BED**



**CONTAINER**



**CONCREAT TANKER**



### **RU 6T DIG & DUMP**

Ideal for road maintenance and many other applications, this versatile machine will help boost productivity and cut costs.




### **BACK HOE LOADER**

Built to the highest standards this machine brings excellent performance and the latest technology to a traditional design.



# Gas Turbine and Generator

Tel: +353 91 792892 / Fax: +353 91 792893

 [facebook.com/asieur](https://facebook.com/asieur)

## One Stored and Never Fired Gas Turbine and Generator Package based on Siemens SGT5-4000F



Picture 1 – Storage of Gas Turbine and Generator

### Main features:

Gross power output:	265 MW
Gross heat rate:	9,222 kJ/kWh
Exhaust temperature:	575 °C
Exhaust mass flow:	661 kg/s
Pressure ratio:	18.2
Fuel:	Natural Gas
GT Generator rated power:	328 MVA
GT Generator voltage level:	20 kV
Grid frequency:	50 Hz
Manufacturer:	Siemens AG
Year of manufacture:	2010

# Gas Turbine and Generator

Tel: +353 91 792892 / Fax: +353 91 792893

 [facebook.com/asieur](https://facebook.com/asieur)



Pictures 2 and 3 – Storage of Gas Turbine and auxiliaries packages

## **List of materials available on site**

### **SGT5-4000F Gas turbine complete of:**

- Gas turbine systems:
  - o Gaseous fuel package
  - o Lubrication oil system with lube oil tank
  - o Hydraulic clearance optimisation (HCO) package
  - o Hydraulic oil package for control system
- Equipment for gas turbine:
  - o Fuel gas flow metering for performance test only
  - o Advanced compressor cleaning system (ACCS)
  - o Set of tools for initial assembly and inspection
  - o Set of major inspection tools and a set of standard tools
- Air intake system
- Exhaust gas system
- Noise enclosure
- Ventilation system for gas turbine enclosure:
- CO2-Firefighting system
- Control System


### **Fuel gas system**

- 2 Dust-liquid separator
- Consumption metering system
- Two Efficiency heater U-Tube bundle with trapped tube plate, carbon steel 10" (DN250) ANSI



# Gas Turbine and Generator

Tel: +353 91 792892 / Fax: +353 91 792893

 [facebook.com/asieur](https://facebook.com/asieur)

## Fuel gas system (continued)

- Dust-liquid separator
- Condensate tank Horizontal with two saddles 2,000 l, double wall
- Final filter Vertical, single stage, Cellulose cartridge
- 5 Shut-off valve, pneumatic actuated, Ball valve, flanged 10" (DN250) ANSI 300
- Pneumatic actuator Single action, spring return 10" (DN250) ANSI 300 without control unit without reducing unit, without venting unit, without solenoid valves, etc.

## Low Voltage Switchgear

- AC Switchgear
- DC Switchgear
- Battery, Charger, DC/DC Converter, Inverter
- Battery Charger
- DC-DC Converter
- Inverter

## Air-Cooled Generator

(Model: SGen5-1000A, Rating: 328 MVA, Voltage: 20 kV; Frequency: 50 Hz; SCR: 0.50; Speed: 3,000 RPM; Power Factor; Coolant: TEWAC)



Picture 4 – Storage of Generator

***asieur***  
TEXTILE SPARE PARTS



**STAUBLI**

YOUR ENGINEERING PARTNER FOR TEXTILE MACHINE SPARE PARTS





# YOUR ENGINEERING PARTNER FOR TEXTILE MACHINE SPARE PARTS

Asieur International Ltd, located in Ireland, are a world leading manufacturing company of textile machine spare parts. With over 35 years experience and knowledge in the manufacturing of textile parts and shipping to over 60 countries worldwide, Asieur are the number one source of spare parts for many leading textile mills around the world.

With our attention to spare parts quality, excellent customer service, competitive pricing, timely delivery of orders and continuous product development puts Asieur at the forefront of textile machine spare parts manufacturing.

“SHIPPING TO OVER  
60 COUNTRIES  
WORLDWIDE”





F292-464-70



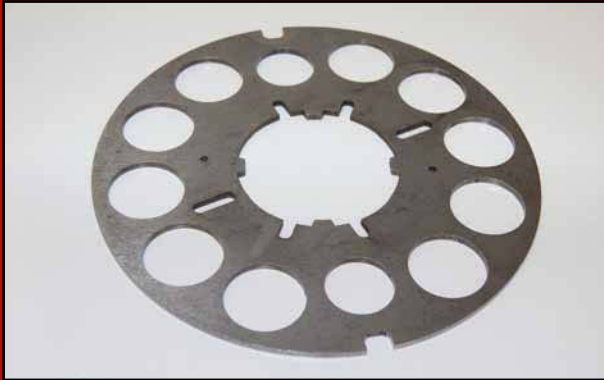
F183-835-12



F292-787-91



F294-502-04



F183-020-08



F294-536-04



F294-628-12



Tel: 00 353 91 792895 (direct)

Fax: +00 353 91 792893

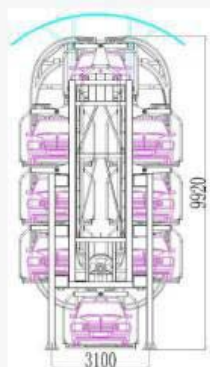
Mobile: 00 353 87 9199700

Email: [info@liftlogistics.com](mailto:info@liftlogistics.com)

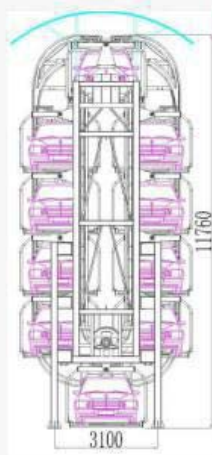
Skype: des16galway

Web: [www.liftlogistics.com](http://www.liftlogistics.com)

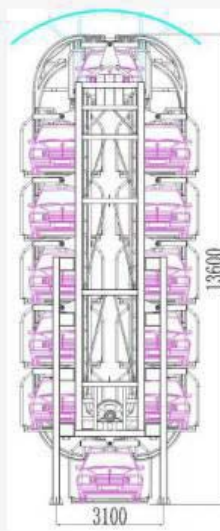
### Model Types For Sedan & SUV



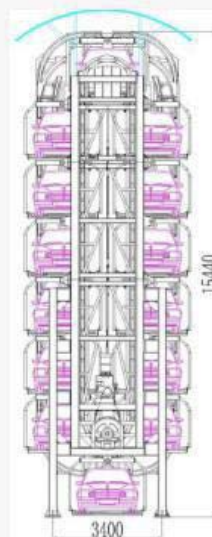
**8 Cars**



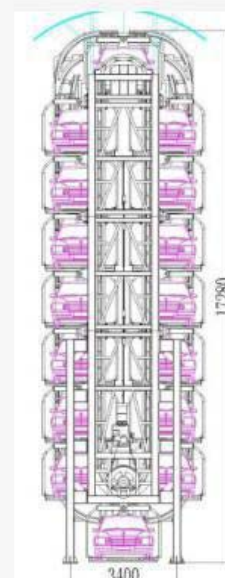
**10 Cars**



**12 Cars**



**14 Cars**



**16 Cars**

The Ground Area For For Sedan is 7.5 mt x 5.5mt.

The Ground Area For SUV is 7.5 mt x 5.7mt.

### Multiple Parking System





## MINERAL WATER PLANT

**Asieur International Limited,  
Carnmore, Oranmore,  
Galway,  
Ireland  
Tel:+353-91-792892  
Mobile/Whatsapp:+353879199700  
Email: [machinery@asier.ie](mailto:machinery@asier.ie)  
[www.asieur.ie](http://www.asieur.ie)**

















**Asieur International Ltd**  
**Carnmore Cross Oranmore, Galway, Ireland.**  
**Tel: +353 91 792892, 792895**      **Fax: +353 91 792893**  
**Phone:+353 91 99700**      **Email: [machinery@asier.ie](mailto:machinery@asier.ie)**

---

**CHOCOLATE MFG PLANT**



## SUMMARY OF THE PLANT

### PRODUCTION CAPACITY

APPROX. 1,000 KG DAILY

### TURNOVER

APPROX. USD50,000 DAILY

### PRODUCTION SIZE

ANY SHAPE OR SIZE AS PER ORDER

### RAW MATERIAL

MAIN = COCOA MASS, COCOA BUTTER

OTHERS = SUGAR, BUTTER, MILK, LECITHIN, VANILLA,...

### MAN POWDER

13 WORKERS x 2 SHIFTS = 26 WORKERS/DAY

### ELECTRIC POWER 200KVA

### BUILDING SPACE

1,000 SQUARE MTR

### MACHINE CONDITION

EXCELLENT CONDITION AS INSTALLED ON THE MILL FLOOR



## PHOTOGRAPHS OF MACHINERY











**Asieur International Ltd**  
Carnmore Cross, Oranmore  
Co. Galway, Ireland

**Tel:** +353 91 792892 / 792895

**Fax:** +353 91 792893

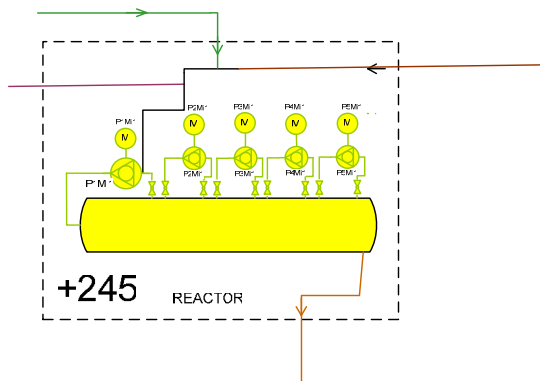
**Email:** sales@asier.ie

**Web:** www.asieur.ie



SIZE	ASCA1	ASCA2	ASCA3	ASCA5	ASCA6	ASCA7	ASCA8	ASCA9	ASCB1	ASCB2	ASCB3	ASCB5	ASCB7	ASCB8
11.00R20														
12.00R20														
12.00R24		▲									▲			
13.00R25												▲		
14.00R20														▲
14.00R24										▲	▲	▲		
14.00R25												▲		
16.00R24										▲				
16.00R25				▲					▲					
17.5R25	▲											▲	▲	
18.00R25					▲						▲	▲		
18.00R33		▲						▲						
20.5R25	▲						▲					▲		
21.00R33		▲												
21.00R35								▲						
23.5R25	▲						▲					▲		
24.00R35		▲						▲						
26.5R25	▲		▲			▲	▲					▲		
29.5R25	▲		▲			▲	▲					▲		
29.5R29	▲					▲								
35/65R33						▲	▲							

## **+245 – 1<sup>st</sup> Reactor, Transesterification:**



Item	Qty	Description
------	-----	-------------

SMxM1 ONE

### **REACTOR, 1<sup>st</sup> TRANSESTERIFICATION**

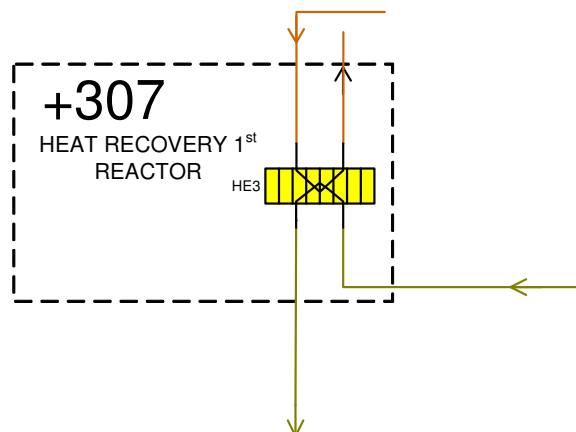
**Function:** Receive, mix and react dosing oil and methanol with catalyst.

**Construction:** Carbon Steel

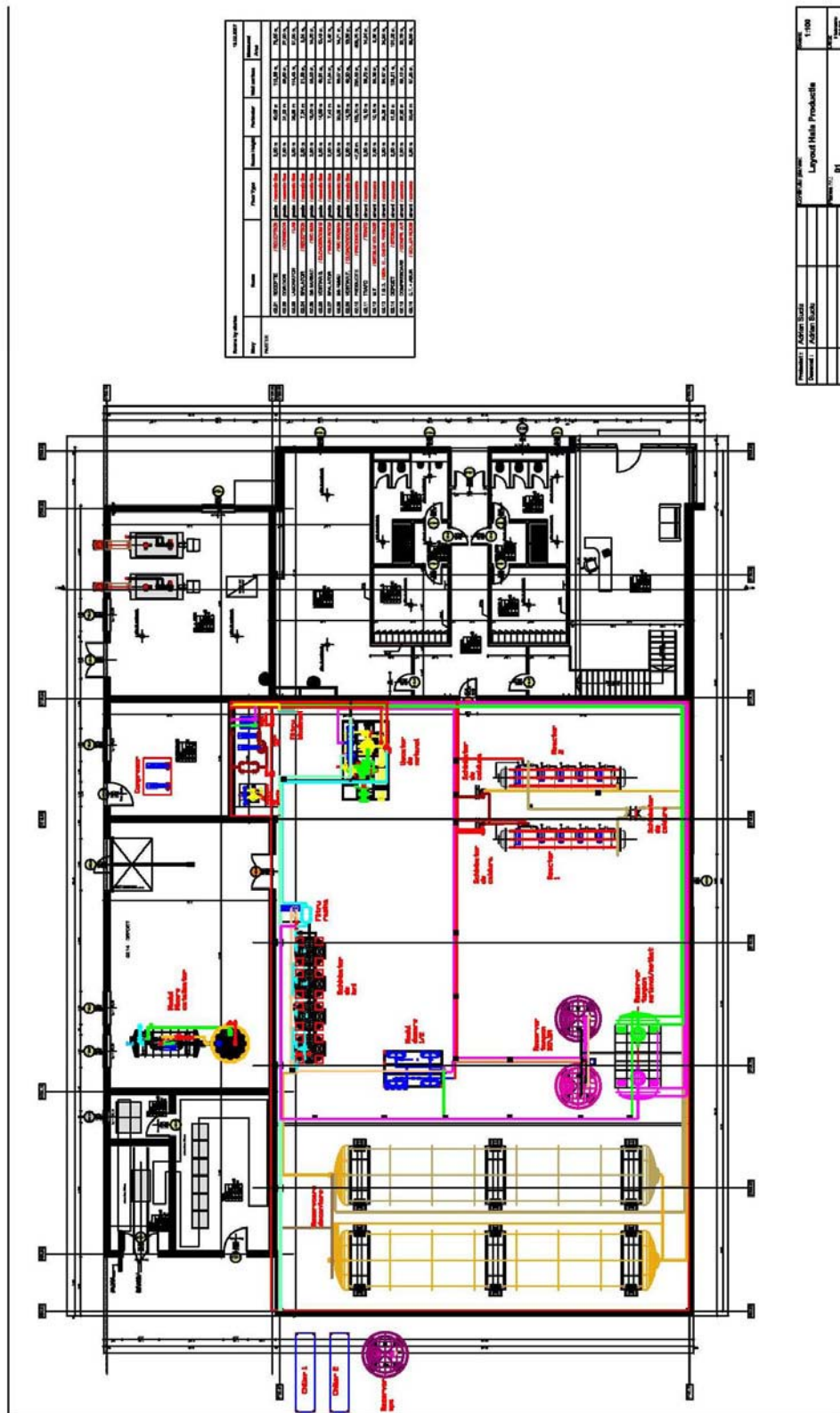
**Design Code:** BS5500/ASME

**Type:** Horizontal cylindrical fabricated vessel with dished ends. Flanged top for access. Necessary inlet, outlet drain and instrument connections. Internal vertical mixer shaft with paddles driven by integral motor and gear reducer. Supporting steel legs.

## **+307 – Biodiesel heat exchanger :**



## Processor layout





## LEATHER PROCESS PLANT

**Asieur International Ltd.**  
**Carnmore, Oranmore,**  
**Galway**  
**Ireland**  
**Tel:+35391792892**  
**Mob:+353879199700**  
**Email:machinery@asier.ie**  
**www.asieur.ie**









**Asieur International Ltd**  
Carnmore Cross, Oranmore  
Co. Galway, Ireland

**Tel:** +353 91 792892 / 792895

**Fax:** +353 91 792893

**Email:** [sales@asier.ie](mailto:sales@asier.ie)

**Web:** [www.asieur.ie](http://www.asieur.ie)

### Maxicut Rolmoer





**Asieur International Ltd**  
Carnmore Cross, Oranmore  
Co. Galway, Ireland

**Tel:** +353 91 792892 / 792895

**Fax:** +353 91 792893

**Email:** [sales@asier.ie](mailto:sales@asier.ie)

**Web:** [www.asieur.ie](http://www.asieur.ie)

## Asieur Bulletproof vest

ADY series bulletproof vests are manufactured with our AT series continuous UD fabric which is one of the best soft ballistic material up to now. The fabric is with multilayers of unidirectional structure, fibers are arranged in a criss-cross ( $0^{\circ}/90^{\circ}$ ) orientation and fixed with adhesives. This kind of structure enables the material to rapidly spread impact energy to large area, resulting smaller indentation and alleviating non-penetration injury.





**Asieur International Ltd**  
Carnmore Cross, Oranmore  
Co. Galway, Ireland

**Tel:** +353 91 792892 / 792895

**Fax:** +353 91 792893

**Email:** [sales@asier.ie](mailto:sales@asier.ie)

**Web:** [www.asieur.ie](http://www.asieur.ie)

## Asieur Bulletproof plate

Asieur ADB series bulletproof plate is manufactured with AT series UD fabric, by adopting special techniques, various protection level can be achieved. The ballistic plates have high capacity of energy absorption and they are conveniently to equip or disassemble, thus they can widely applied to armor vehicles, vessels and body protection.







**Asieur International Ltd**  
Carnmore Cross, Oranmore  
Co. Galway, Ireland

**Tel:** +353 91 792892 / 792895

**Fax:** +353 91 792893

**Email:** [sales@asier.ie](mailto:sales@asier.ie)

**Web:** [www.asieur.ie](http://www.asieur.ie)

## Asieur Bulletproof helmet

Bulletproof helmets are generally used to prevent bullets and shrapnells, and experiments show that ballistic helmets, which are made from ATX series UHMWPE fiber and thermoplastic resin matrix, can provide excellent protection. This kind of helmets is anti-UV light and could alleviate influence of moisture.





**Asieur International Ltd**  
Carnmore Cross, Oranmore  
Co. Galway, Ireland

**Tel:** +353 91 792892 / 792895

**Fax:** +353 91 792893

**Email:** [sales@asier.ie](mailto:sales@asier.ie)

**Web:** [www.asieur.ie](http://www.asieur.ie)

## Asieur Bulletproof shield

ADP series bulletproof shield is made of AT series UD fabric, with special heat pressing techniques, it can be widely applied in civilian law enforcement, public security and riot control.

Features:

- 1.Light weight, convenient to carry or move
- 2.High protection level
- 3.Equipped with bulletproof glass viewpoint
- 4.Easy to use and disassemble





**Asieur International Ltd**  
Carnmore Cross, Oranmore  
Co. Galway, Ireland

**Tel:** +353 91 792892 / 792895

**Fax:** +353 91 792893

**Email:** [sales@asier.ie](mailto:sales@asier.ie)

**Web:** [www.asieur.ie](http://www.asieur.ie)

## Asieur Bulletproof armor plate

Asieur ADZ series bulletproof armor plate is manufactured with AT series UHMWPE UD fabric. The vehicles and vessels, which adopt ADZ series bulletproof armor plate, would greatly reduce their weight, thus giving allowance to bomb load, enhancing their mobility and combat effectiveness.





## A68N Series

### Intelligent Cash Recycler

**A68N** series are cutting-edge cash recyclers, which shift heavy counter transactions and frequent cash replenishment to self-service and self-replenishment zone. With high capacity, Serial Number Tracking technology, biometric authentication and coin dispensing features, they are capable of supporting big volume transactions, delivering advanced and reliable service to customers, and extending banking channel and value-added service for different scenarios.



## Easy to Own

- ♦ Small footprint yet versatile functionalities minimize total cost of ownership.
- ♦ Designed for faster and simpler transactions, the new series support longer business hours and more transactions with high capacity.
- ♦ Intrinsic security features enhance transaction securities.
- ♦ Large volume of receipt paper roll and less maintenance frequency maximize machine uptime.

## Easy to Use

- ♦ User-friendly design with big screen and voice guidance impresses users at the first use and makes it stand out from a group of ATMs in the self-service zone.
- ♦ Certified with global proven security standards, GRG provides enhanced multi-layer and physical protection solution to minimize the risk and fraud and enhance customer confidence on security.
- ♦ Auto-retract receipt printer and privacy filter protect customer privacy.

## Easy to Maintain

- ♦ Front, rear and side access make it extremely easy for maintenance.
- ♦ Off-line diagnosis and error graphic guidance enable quick problem-shooting.
- ♦ The 24/7 ATM diagnosis, monitoring and management software solution enables administrators to surveillance the whole cash circulation process on their PC or mobile and take precautionary measures, assuring machine maximum uptime.



A68N



A68NL



A68NLR

## Hospital Ward Beds



**GPD-0001**



**GPD-0002**



**GPD-0003**



**GPD-0004**



**GPD-0005**



**GPD-0006**



**GPD-0007**



**GPD-0008**

**More Types  
Available Upon  
Request**





**GPD-3101**



**GPD-3102**



**GPD-3103**



**GPD-3104**



**GPD-3105**



**GPD-3106**



**GPD-2716**



**GPD-2718**

**More Types  
Available Upon  
Request**

## Canes & Crutches



**GPD-ASCA801LL**



**GPD-ASCA801LM**



**GPD-ASCA801LS**



**GPD-ASCA802LL**



**GPD-ASCA802LM**



**GPD-ASCA802LS**



**GPD-ASCA833L1**



**GPD-ASCA834L2**

**More Types  
Available Upon  
Request**



**GPD-2901**



**GPD-2902**



**GPD-2903**



**GPD-2904**



**GPD-2905**



**GPD-2906**



**GPD-2907**



**GPD-2908**

**More Types  
Available Upon  
Request**